



Ares Marine

Life Cycle Services





Address:
Güzelyalı, Egemen Sk. No:26, 34903
Pendik/İstanbul

Phone: +90 216 446 23 28

Mail address:

General: info@ares-marine.com
Sales: Sales@ares-maine.com
Service: Service@ares-marine.com



Company Overview

- ◆ Founded in early 2016 and headquartered in Güzelyalı, Istanbul. Ares Marine quickly became a significant player in the Turkish Shipbuilding Industry. Established by industry veterans with experience dating back to the late 1980s, Ares Marine specializes in cargo control, monitoring, instrumentation, navigation, and advanced marine electronics. our mission is to deliver high-quality solutions to **shipyards and shipowners**, combining global expertise with **competitive pricing and robust support**.
- ◆ In **December 2016**, Ares Marine merged with **Ormar Ltd.**, a well-established company in the marine industry since 1988. This merger brought together extensive technical services and a renowned selection of marine products under the unified brand **Ares Marine Ltd.**, further strengthening their market presence and commitment to delivering exceptional products and services.



EMERSON™

- ◇ CMS (Cargo Monitoring System)
- ◇ TLG (Tank Level Gauging)
- ◇ VRCS (Valve Remote Control System)
- ◇ FM (Fuel Management)
- ◇ CTS (Custody Transfer System)
- ◇ Smart Propulsion System

Cargo Monitoring System

CMS is used in marine vessels to monitor cargo status in real-time, tracking tank levels, temperature, and pressure. It ensures safe handling, prevents overflow, and enhances efficiency during cargo transport and operations, meeting safety and regulatory standards.

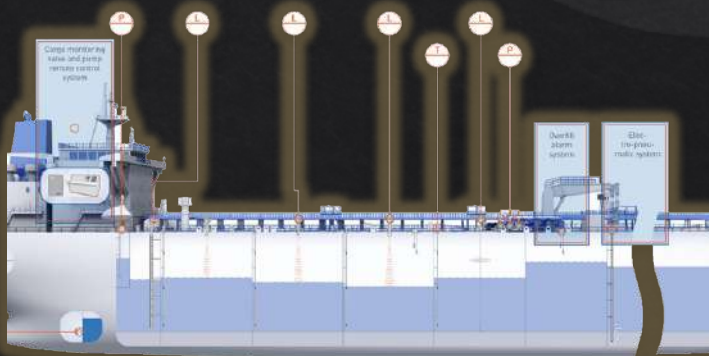
What we do:

System Overhaul

Training and Support

Inspection and Troubleshooting

Startup and Commissioning



Tank Level Gauging

Tank gauging involves the measurement of liquid levels in large storage tanks (Fuel, Ballast, Fresh Water Tanks, Drafts) to ascertain product volume. The Emerson Tank Gauging System guarantees precise measurements of level, temperature, and pressure.

What we do:

System Overhaul

Inspection and Troubleshooting

Training and Support

Startup and Commissioning



Valve Remote Control System

Improve operational continuity while reducing expenses through low-maintenance systems that adhere to environmental regulations. Our Valve Remote Control solutions are tailored and adaptable, designed to suit your marine applications with precision. Whether you require hydraulic, electro-hydraulic, electric, or pneumatic actuation, our solutions are customized to meet your specific needs.



What we do:

System Overhaul

Inspection and Troubleshooting

Training and Support

Startup and Commissioning

Fuel Management

Emerson's Integrated Control and Monitoring System helps you comply with environmental regulations, get accurate real-time data and obtain an overview of fuel, engine and vessel performance. Thanks to Coriolis technology powered by Micro Motion flowmeters provided measurements and control over the entire fuel management system from bunkering to consumption.



What we do:

Inspection and Troubleshooting

Training and Support

Startup and Commissioning

Custody Transfer System

Emerson Custody Transfer System is the most accurate and reliable fiscal measurement system for LNG carriers. For years our technology has been used onboard tankers and in overflow systems. From this, we have developed a dual radar solution using a single still pipe and antenna, providing precise data and uninterrupted system uptime to maximize profitability during the loading and discharging process.



What we do:

System Overhaul

Inspection and Troubleshooting

Training and Support

Startup and Commissioning



- ◆ Fire Detection System
- ◆ Gas Sampling / Detection System
- ◆ Voyage Data Recorders
- ◆ Speedlog System
- ◆ EchoSounder System

Fire Detection System

Fire detection systems are vital for maritime safety, designed to protect lives, vessels, and cargo from fire threats. Using advanced sensors and real-time alerts, these systems enable rapid response to potential dangers. Consilium Safety systems ensure compliance with maritime regulations, minimizing risks and enhancing operational safety. Beyond meeting standards, they provide peace of mind, supporting efficient and secure maritime operations.

What we do:



System Health Check

Inspection and Troubleshooting

Training and Support

Startup and Commissioning

Gas Sampling / Detection System

The Consilium Gas Sampling System (CGS50/500) integrates seamlessly with the modular Consilium Common Platform (CCP), offering flexibility, user-friendliness, and easy upgrades. The system allows for tailored functionalities, ensuring adaptability, while its backward compatibility with the Salwico SW2020 simplifies replacements. With a global support network and efficient service procedures, Consilium ensures reliability and quick access to spare parts.



What we do:

Verification and Calibration

Inspection and Troubleshooting

Training and Support

Startup and Commissioning

Voyage Data Recorders

Voyage Data Recorders (VDRs) are crucial for maritime safety, recording key data such as ship position, speed, and sensor information throughout a voyage. These systems are vital for post-voyage analysis, performance assessment, and regulatory compliance. At Ares Marine Ltd., we provide reliable, cutting-edge VDR solutions through our partnership with Consilium, ensuring exceptional support and peace of mind for our customers.



What we do:

VDR APT (Annual Performance Test)

Inspection and Troubleshooting

Startup and Commissioning

Speedlog and Echosounders System

Speed logs and echosounders are essential tools for maritime operations, ensuring both safety and efficiency. Consilium speed logs provide real-time, accurate data on a vessel's speed, helping operators make informed decisions to optimize navigation and fuel consumption. Echosounders, meanwhile, measure water depth and underwater terrain, ensuring safe passage by identifying obstacles.

What we do:



Transducer Replacement

Inspection and Troubleshooting

Startup and Commissioning

INELTEH

Established in 1990, INELTEH is a private company with a 35-year foundation in marine equipment and systems development. The company's production spans four key product categories: Signalling, Navigation, Automation, and Level Detecting and Measurement.



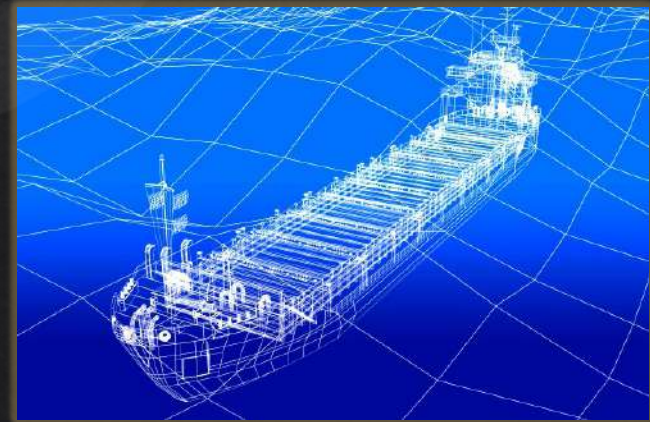
- ◇ B.N.W.A.S
- ◇ High Level And Overfill Alarm System
- ◇ Emergency Engine Response Telegraphs
- ◇ General Alarm System
- ◇ Water Ingress system
- ◇ Flood Detection System
- ◇ Magnetic Level Detecting



NAPA

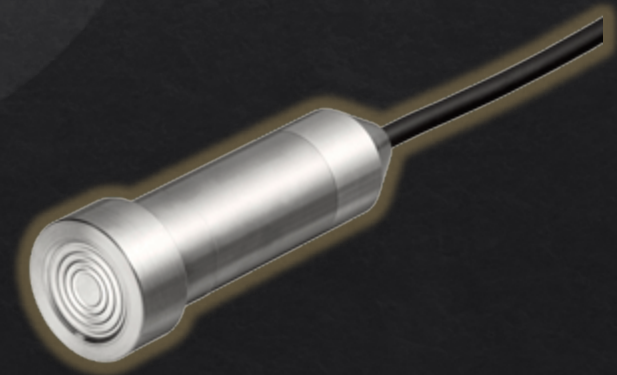
With over 30 years of expertise, NAPA stands as a leading maritime software and data services provider, headquartered in Finland and operating globally with a presence in key maritime hubs. Renowned for ship stability management and safety data services, especially for passenger ships, NAPA also plays a pivotal role in supporting the maritime industry's decarbonization journey through its cloud-based solutions for ship performance monitoring and voyage optimization.

- ◆ Ship Design Software,
- ◆ Loading Computer,
- ◆ Fleet Intelligence



KLAY-INSTRUMENTS

Klay Instruments specializes in the development and production of comprehensive stainless steel instruments designed for measuring pressure, level, flow, and temperature in the process industry, facilitating the automation of industrial processes.



Local Stock

- ◆ Ares Marine's warehouse, strategically located in Istanbul, is stocked with a wide range of spare parts, ensuring the shortest possible delivery times. Our extensive inventory allows us to meet urgent requests efficiently, minimizing downtime for our clients.
- ◆ Additionally, Ares Marine's dedicated Import/Export team handles all aspects of customs clearance, taxes, and regulatory compliance related to the import and export of spare parts. This ensures a smooth and hassle-free process for our customers, no matter where in the world their vessels are located.

Certificates

